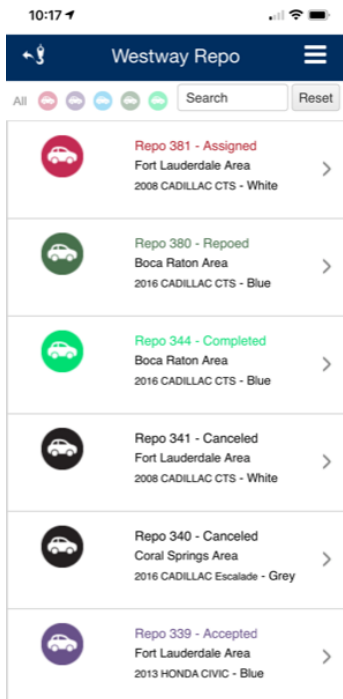
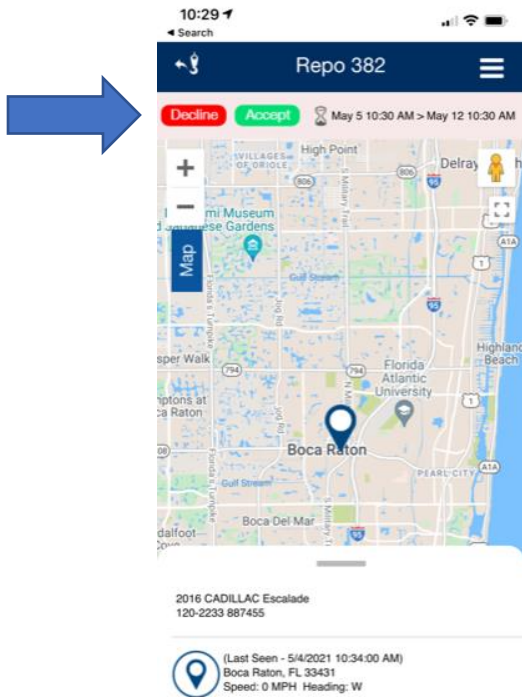


## RepoLinX Mobile App Quick Reference Guide



Manage & filter  
repo orders by  
status

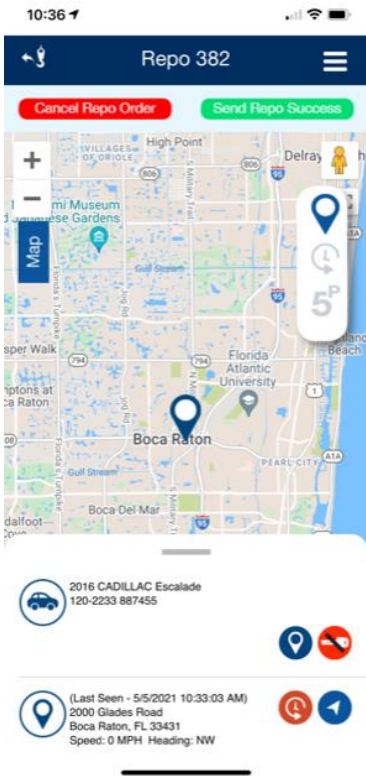
## RepoLinX Mobile App Quick Reference Guide



---

Accept or  
decline the  
order

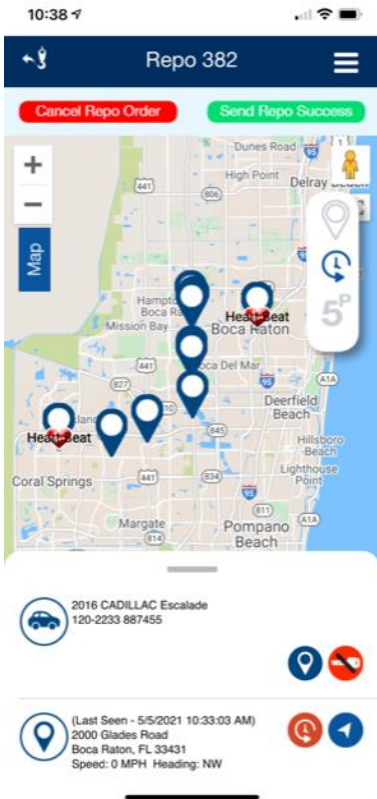
# RepoLinX Mobile App Quick Reference Guide



## Send commands to vehicle's unit

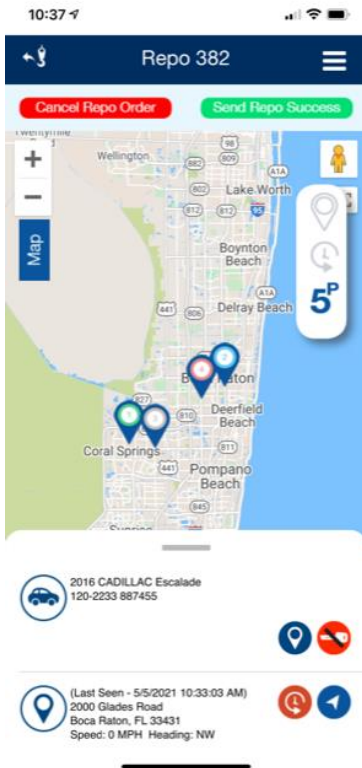


## RepoLinX Mobile App Quick Reference Guide



View Recent  
History

## RepoLinX Mobile App Quick Reference Guide



View top 5  
parked locations

RepoLinX Mobile App  
Quick Reference Guide



Initiate SmarTrack and FasTrack  
commands (See next page for  
definitions)

# RepoLinX Mobile App Quick Reference Guide

## SmarTrack & FasTrack Command Definitions



**FasTrack** - a new command that will turn on a breadcrumb location schedule for a duration of 30 minutes, where the unit will send the updated locations based on movement as well as the stopped and moving messages



**SmartTrack** - a new command that will turn on stopped and moving messages for a period of 3 days (period starting with the first movement event)